

pore
enrichment

5 YEAR
WARRANTY

HUME SENSE TOP FILL HUMIDIFIER



USER MANUAL
MODEL: PEHUTRB-W

TABLE OF CONTENTS

WARNINGS AND PRECAUTIONS	3-4
FCC NOTICE	5
INTRODUCTION & PRODUCT SPECIFICATIONS	6
PRODUCT DIAGRAM.....	7
USING THE HUMIDIFIER	8-10
INSTALLING THE DECALCIFICATION FILTER.....	11
CLEANING THE HUMIDIFIER	12-13
END OF SEASON STORAGE.....	14
TROUBLESHOOTING	14-15
WARRANTY & PRODUCT REGISTRATION.....	16

WARNINGS AND PRECAUTIONS

READ AND SAVE THIS ENTIRE INSTRUCTION MANUAL BEFORE OPERATION. FAILURE TO ADHERE TO THE FOLLOWING INSTRUCTIONS CAN CAUSE HARM TO YOU OR THE PRODUCT.

- To reduce the risk of burns, electrical shock, fire, and accident, use this product only in accordance with the following instructions.
- Disassembly, repair, or remodeling by an unauthorized person may result in serious harm and will void the manufacturer's warranty.
- Always place this humidifier on a firm, flat, and moisture-resistant surface. This humidifier may not work properly on an uneven surface. Keep the humidifier at least 12 inches away from walls for best results. Do not face the mist outlet directly toward the wall. The manufacturer does not accept any liability for damage in the case of the product being placed incorrectly.
- Do not place this product on cloth, carpet or an absorbent surface. This may block the air inlet.
- Do not use this product near any other electronic device or when plugged in near a sink.
- Do not use this product in direct sunlight or near a heat source such as a stove, heater, or radiator.
- Do not cover the air inlet or the mist outlet with a cloth or hand at any time during use.
- Turn off and unplug the product before moving or filling the tank or moving the unit.
- Do not add hot or boiling water. Use only cold water (tap, distilled, mineral, or other drinking water).
- Do not submerge the unit in water or pour water into the mist outlet.
- Do not use if the plug is damaged or loose.
- Once the humidifier has been plugged in for use, do not tilt, move, or empty the unit.
- Do not remove or handle the plug with wet hands.
- Do not excessively bend, twist, pull, or damage the power cord.
- Unplug the product when it is not in use for an extended period of time and/or when no one is home.
- When unplugging from the outlet, hold the product securely.
- Do not place cord over objects.
- Do not get water in or on the power cord or where the cord connects to the product.

WARNINGS AND PRECAUTIONS (CONT.)

- Do not touch the water tank during operation.
- Do not put anything on or in the tank.
- If the water tank becomes cracked or damaged, do not use the humidifier.
- Do not leave water in the tank when not in use for an extended period of time.
- Use only the cleaner and additives recommended by the manufacturer to clean the water tank.
- Keep this product out of the reach of children and pets.
- Please email Customer Service at help@pureenrichment.com if the humidifier needs repair. Do not try to repair it yourself.
- Avoid spilling essential oil on your skin. If you do, immediately dilute it with a carrier oil like coconut oil or olive oil. If swallowed, seek medical help immediately.
- Clean the aroma tray after every use. If the oil previously used is not completely removed, the aroma mixture may release an offensive odor or may have residue forming.
- If you feel unwell while using this product, turn off unit immediately.
- Pregnant women, elderly people, young children or people with chronic diseases may be more sensitive to a particular fragrance.

FCC NOTICE

Model: Hume Sense Top Fill Humidifier (PEHUTRB-W)

This device complies with Part 18 of the FCC rules.

Pure Enrichment
2803 S. Yale St.
Santa Ana, CA 92704
pureenrichment.com

This equipment generates, uses and can radiate radio frequency energy and, if not installed and used in accordance with the instructions, may cause harmful interference to radio communications. The equipment should be maintained as discussed in this manual. Changes or modifications not expressly approved by Pure Enrichment will void the user's authority to operate the equipment. If this equipment does cause harmful interference to radio or television reception, which can be determined by turning the equipment off and on, the user is encouraged to try to correct the interference by one or more of the following measures:

- Reorient or relocate the receiving antenna.
- Increase the separation between the equipment and receiver.
- Connect the equipment into an outlet on a circuit different from that to which the receiver is connected.
- Consult dealer or experienced radio/TV technician for help.

INTRODUCTION

Thank you for purchasing the Hume Sense Top Fill Humidifier from Pure Enrichment. This high-volume mist humidifier is the perfect solution for moisturizing dry air in the larger rooms of your home or office.

PRODUCT FEATURES

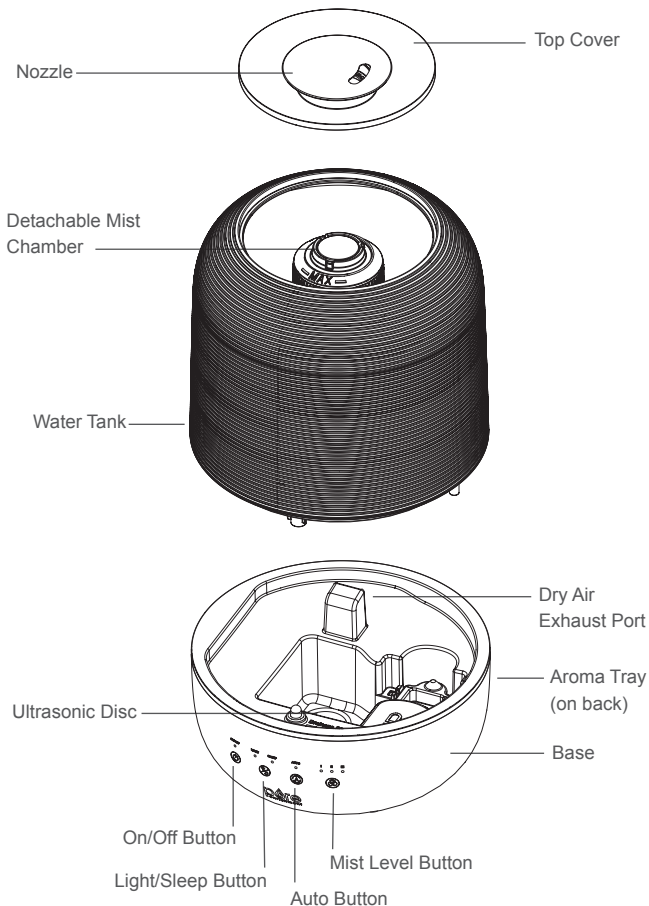
- 3 Liter Water Tank
- 3 Mist Levels (Level I, Level II, Level III)
- Automatic Mode
- Built-in Humidistat
- Optional Night Light with Color Choice Technology™
- Whisper-Quiet Operation
- Aromatherapy Option

PRODUCT SPECIFICATIONS

Size:	7.4" (H) x 7.4" (D) x 9.6" (H)
Power Supply:	AC 120V, 60HZ, 25W
Max Room Coverage:	Up to 475 ft ²
Max Run Time*:	Up to 37 hours (Level I); Up to 18 hours (Level II); Up to 12 hours (Level III)
Tank Capacity:	3 liters
Moisture Output:	100ml/hour ±20% (Level I); 200ml/hour ±20% (Level II); 300ml/hour ±20% (Level III)
LED Lights:	Multi color-changing lights

*Run time is based on testing conditions at 70°F, 30%RH. Results may vary depending on water quality and room conditions.

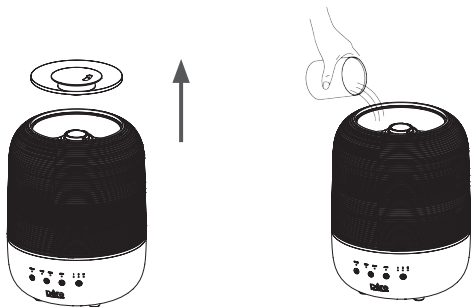
PRODUCT DIAGRAM



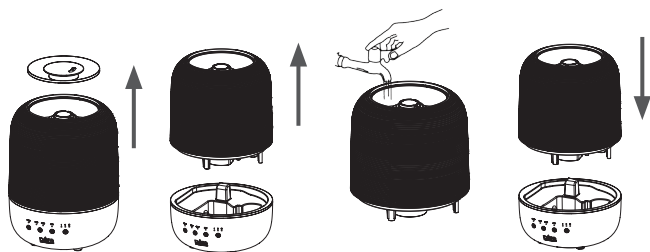
USING THE HUMIDIFIER

Add water to the humidifier by either

a. Removing the top cover and adding water directly to the tank, or



b. Removing the top cover and taking the water tank off of the base and then filling the water tank with water before returning it to the base.

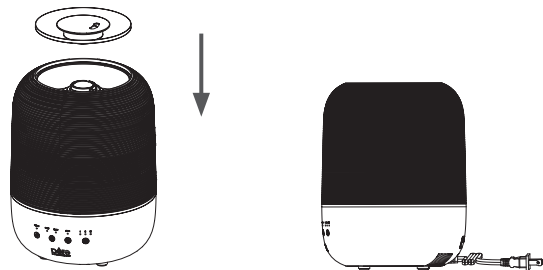


NOTE: Do not add water directly into the mist chamber.

CAUTION: Turn off the power before removing the top cover.

USING THE HUMIDIFIER

1. Fill water into the tank, then press the top cover firmly on the water tank.




2. Plug in the humidifier.

3. Touch the power ON/OFF button  to turn the humidifier on or off. When powered on, the humidifier starts at Level I and the night light cycles through 7 colors (default setting). The white indicator lights will be lit.

4. Touch the LIGHT/SLEEP button  to set the desired night light color or sleep mode.

- 1st press: The night light will stay on the current color. The indicator light flashes 3 times.
- 2nd press: Unit enters sleep mode and maintains mist level with all lights turned off (other than indicator light). The indicator light will flash 5 times.
- 3rd press: Sleep mode turns off. The unit returns to previous settings. Sleep mode may also be turned off by pressing any button. When AUTO is pressed, Automatic mode will be activated.
- 4th press: Night light cycles through 7 colors.

5. Touch the AUTO button  to turn on automatic mode, which automatically monitors and reports the air humidity in the room. The mist level will automatically adjust from Level I, II, or III as needed to maintain the ideal air humidity according to the ambient humidity listed below.

- When the room air humidity level is less than 45%: fan operates on Level III and night light is red.
- When the room air humidity level is between 45% and 65%: fan operates on Level II and night light is blue.

USING THE HUMIDIFIER

- When the room air humidity level is over 65%: fan operates on Level I and night light is orange.
- Press any button to turn off Auto mode.

6. Touch the Mist Level button  to control mist level.

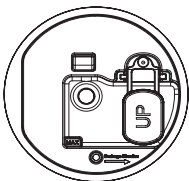
- 1st Press - Level II
- 2nd Press - Level III
- 3rd Press - Level I



7. The unit has a built-in memory feature. When plugged in and turned off and turned back on, it will return to the previous settings. This applies to Auto, Mist Level, and Night Light. The memory feature will not work if the unit is unplugged.

NOTE: When the water level is low or the tank is removed the unit will stop producing mist and the indicator light will change from white to red. When the tank is removed for refilling, it will resume working on the previous setting after the tank is placed back on the base. When refilling without removing the tank, the device will automatically start on the last used setting after the water level returns back to normal.

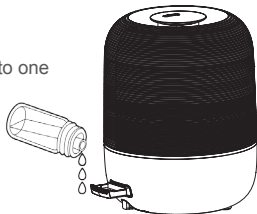
Please make sure the water level in the reservoir does not exceed the MAX indicator. If mist does not come out after moving the unit, please drain water from the reservoir to ensure the water level is under the MAX indicator.



HOW TO USE AROMATHERAPY

Add a few drops of your favorite essential oil to one of the included Aroma Pads.

Push the aroma tray to open it and add the aroma pad to the tray.

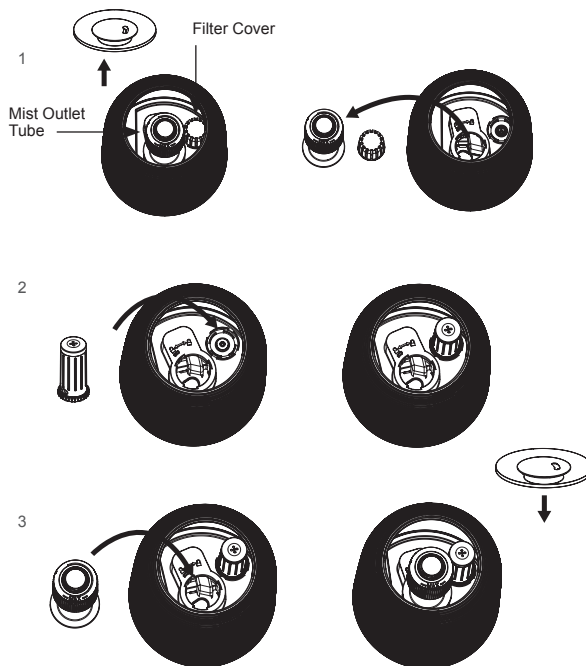


WARNING: Only place 1 aroma pad into the tray at a time and only add oil to the pad. Oils added to the tank will damage the tank and the whole unit. Any use of such additives in the tank will void the manufacturer's warranty. Make sure that the oil does not touch any other part of the product as this may damage the materials.

INSTALLING THE DECALCIFICATION FILTER

A decalcification cartridge (sold separately) may be used to keep the tank free of hard mineral deposits. Follow the steps below to install the cartridge. For optimal performance, replace the decalcification filter every 2-3 months. This timing may vary depending on use. Additional replacement filters (Model PEHUTFIL) can be purchased at pureenrichment.com.

1. Open top cover, remove mist outlet tube and filter cover.
2. Put decalcification filter on the water inlet.
3. Install the mist outlet tube and top cover.
4. IMPORTANT: Save filter cover for future use without filter.
5. Please note: For your convenience, each cartridge is pre-soaked. As a result, some moisture may remain in the bag.



CLEANING THE HUMIDIFIER

Turn the unit off and disconnect the power plug before cleaning.

NOTE: Be sure you are near a sink or other water-resistant area before cleaning. There will be some remaining water in the base. Discard it before moving the base to prevent spilling.

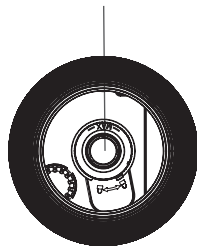
GENERAL CLEANING

1. Cleaning the tank base
 - a. Pour out excess water in the direction shown on the base.
 - b. Wash out the unit with water and a soft cloth as needed.
 - c. Do not submerge the base of the unit into the water, or allow water to enter inside the dry air exhaust port of the unit.
2. Cleaning the water tank
 - a. Empty the tank.
 - b. Clean with water and a bottle cleaning brush (not included).
Note that by turning the mist chamber to the left, the mist chamber can be removed for easier cleaning.
3. Clean the outer surface of the unit by wiping with a soft cloth as needed.

Cleaning Brush



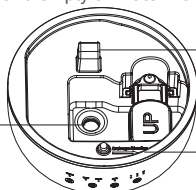
Detachable Mist Chamber



4. Cleaning the ultrasonic disc
 - a. Unplug the humidifier.
 - b. Remove the tank and empty all water from the unit base and tank.

*Clean the disk with the brush only. No other cleaning tool should be used. **BRUSH ONLY.**

Ultrasonic Disk



*Make sure water doesn't flow into **Dry Air Exhaust**

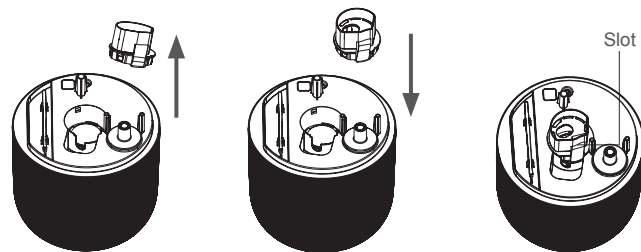
*Pour out excess water in the direction of the arrow shown on the base.

GENERAL CLEANING (CONT'D)

- c. Locate the ultrasonic disk on the inside center of the base unit.
- d. Use **ONLY** the enclosed cleaning brush to gently clean the disc and remove build-up and deposits.

NOTE: Do not scrub or scrape the ultrasonic disc.

5. Cleaning the water sound eliminator
 - a. For easier cleaning, remove the water sound eliminator by pulling it up from the tank bottom.
 - b. After cleaning, align the slot on the sound eliminator with the slot on the tank bottom and press it down to lock it into place.



DESCALING

Depending on the usage and water type, cleaning to remove scale may be required weekly or every other week to optimize the product's performance. We suggest using distilled water if the water in your area is hard. Do not clean the unit or water tank with harsh detergents or cleaning chemicals, vinegar may be used instead. If scale becomes too difficult to remove with a brush:

1. Fill the base with a mixture of 1 tsp. white vinegar and 1 tsp. water.
2. Let solution stand for 5 minutes.
3. With the vinegar solution in the reservoir, clean all interior surfaces with a soft cloth or brush to help remove scale.
4. Clean mist nozzle and mist chamber inside the water tank as needed.
5. Rinse the reservoir thoroughly with water to remove the scale and vinegar solution.

END OF SEASON STORAGE

- Turn off and unplug the humidifier before storing it.
- Carefully clean the humidifier. Make sure all parts are clean and dry prior to storing the product. Do not leave water in the tank. Water left in the humidifier may result in mineral deposits and promote the growth of mold or other microorganisms.
- Store the humidifier in a cool and dry location. Keep away from direct sunlight.

TROUBLESHOOTING

If you are having problems with your humidifier, see if one of the solutions below can resolve the problem before contacting the manufacturer.

Problem	Solution
No mist or a small amount of mist	Water tank is empty: Refill the water tank. Ultrasonic disc is dirty: Clean the disc with a soft cloth. Air inlet is blocked: Place the unit on a flat, hard surface to allow air to flow freely.
Humidity level is low	Ultrasonic disc is dirty: Clean the disc with a soft cloth. Water in tank is too cold: Replace with cool water.
Mist has a bad aroma	Dirty water/humidifier: Clean the humidifier completely and refill with clean water.
Air blows but mist is not produced	Excessive water: Pour out extra water. Residue inside tank: Wash tank and try again. Ultrasonic disc is dirty: Clean the disc with a soft cloth. Water is too hard: If you use hard water, replace it with softer water.
White dust is forming on nearby furniture	Water is too hard: Dust in the air settles because of added humidity in the room, hard water causes this to happen more often. Use distilled water if it persists.
Humidifier has power and is not working	Plug is not placed correctly: Unplug and try again. Water tank is empty: Refill the water tank. Water tank is positioned incorrectly: Replace the water tank into the base properly.

Problem	Solution
Water is accumulating outside of the unit or area surrounding the unit	Mist level too high: Lower mist control setting. Unit is not level: Place unit on a flat, level, hard surface. Unit is too close to objects: Point mist away from objects: Raise unit on a level water-resistant surface 2-3 feet off of the floor.
Water dripping when refilling	Water remaining on bottom of tank: Wipe tank or tilt to drain before transporting.
Increased noise level	Unit is not level: Place unit on a flat, level, hard surface. Make sure it is NOT placed on a soft or absorbent surface.
Red light on power dial	Low water: Unplug and refill tank.
Cannot smell aroma scent	Add more oil: Add a few more drops of oil to aroma pad. Replace aroma pad: Discard old pad and replace aroma pad with a new one.

If your problem is not resolved by the solutions listed above, contact Pure Enrichment for assistance by emailing help@pureenrichment.com.

NOTE: IF YOU EXPERIENCE A PROBLEM DO NOT ATTEMPT TO OPEN THE HOUSING YOURSELF. DOING SO MAY VOID YOUR WARRANTY AND CAUSE DAMAGE TO THE HUMIDIFIER OR PERSONAL INJURY.

WARRANTY

The Hume Sense Top Fill Humidifier comes with an industry-leading 5 Year Warranty that begins on the date of purchase.

The warranty applies to the humidifier and necessary parts and labor relating thereto. The warranty does not apply to damage resulting from failure to follow the operating instructions, accidents, abuse, alterations, or disassembly by unauthorized individuals.

PRODUCT REGISTRATION

To ensure your full warranty and to receive product updates and streamlined customer support, remember to register your product at:

pureenrichment.com/productregistration

PRODUCT SUPPORT

We've got you covered with a hassle-free warranty and friendly product support that responds within 1 business day.

help@pureenrichment.com

(657) 275-3737

(Available Monday-Friday, 8am-5pm PST)



Santa Ana, CA 92704

pureenrichment.com